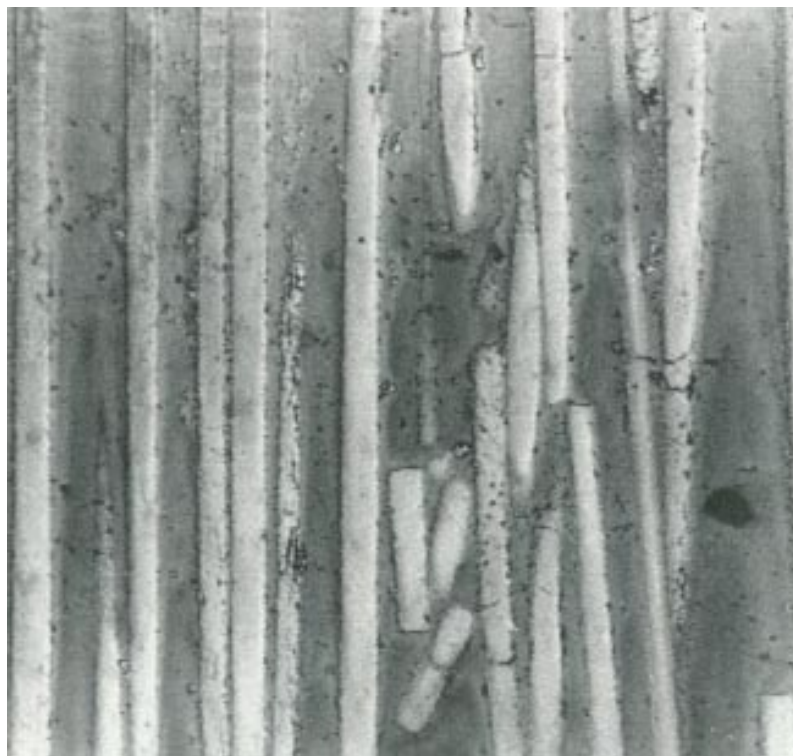


acoustic microscopy

Deformation of a compound material near to a fractured edge

A rod of aluminium oxide fibres (whiskers) embedded in an aluminium matrix was broken in two. Vertical to the area of fracture near the edge structural changes can be made visible similar to those familiar from stress polarization measurements on transparent materials.



Frequency 1.8 GHz, Image width: 100 μ m